

Shop Manual

www.badgoat.net/ptcaths

April 2010

The Season's Excitement Builds Edition

President's Message

A couple of months have elapsed since the last Shop Manual. The vintage truck activity in my garage was nil in February and March, however I did enjoy several hobbyist events since the last newsletter.

I spent one day at the Zephyrhills Swap Meet in mid February. I was able to coerce Dick McKnight (Tully NY) into parting with some REO, International and GMC literature for a small price. Annette and I attempted to go to Muscle Car City in Punta Gorda while in Florida. Unfortunately I hadn't noticed (on their website) they are open only six days a week; and Monday isn't one of the open days. We will try again in 2011.

I was in Kansas City for the Spring Board of Directors Meeting in early March and spent the first day at ATHS Headquarters Zoe James Library sorting several binders of GMC literature, and looking for specific references on the REO Model 27. The REO Model 27 (1941-47) was the predecessor to the Model 31. If you are in Kansas City (MO) you should drop into ATHS Headquarters and the Zoe James Library. If you have information on, or know the whereabouts of a, REO Model 27 please contact me.

The Chapter held its Winter Gathering at Daryl Gushee's shop on Saturday, March 13th. Approximately 40 Chapter members and guests were in attendance for numerous late winter discussions, for viewing Daryl's varied collection, and partaking in the traditional Pine Tree Chapter pot luck lunch. The pictures of Daryl's 60's vintage Kenworth shuttle rocket booster hauler and trailer do not do the truck and trailer justice. They are, in McDonald's terminology, super sized. A Chapter thank you to Daryl for hosting the 2010 Winter Gathering.

Last, but not least, was the Chapter's Annual Business Meeting at Owls Head. There is a summary report on the annual meeting inside.

For those that haven't caught up with Paula and Higmo on their 2010 dues please do so as soon as possible. Those in arrears when the fourth newsletter is published in late May/early June (this is number two) will be dropped from the Chapter membership list.

The Spring Stretch is just under two weeks away. We are headed to Stanley Young's in Cardville on April 17th for a day of fun and excitement. Hope to see you there.

Clayton

2010 Annual Meeting Summary

The Pine Tree Chapter's Annual Meeting was held on Sunday, March 28th at the Owls Head Transportation Museum. Members and guests started to gather around 10:00 and the business meeting began around 1:00. Approximately 45 members were in attendance. Museum Executive Director Charlie Chiarcharro addressed the membership for several minutes providing some information on proposed changes at the truck show.

Several 2010 events were discussed at the meeting.

Stanley Young volunteered to host the Spring Stretch on April 17th at his home in Cardville after some (very) minor arm twisting. Additional information on the Spring Stretch is further inside this newsletter.

The Spring Tour was re-scheduled to May 22nd and 23rd at the request of our hosts, Allen Higgins and Paula Hersom, to avoid a conflict with the graduation of a family member. Higmo is working to get us a sawmill tour of an associate in the Rumford area. The tour will be in western Maine - Rumford, Bethel and points west. Additional information will be in the May newsletter.

The Museum's proposed changes at Owls Head Truck Show were discussed. There was general consensus that the Saturday evening buffet needed to be \$20.00 (or less), the meal should start at 5:00 or 5:30 so people could get back their rooms/ campers earlier, and entertainment should be away from the meal area. This information will be shared with the Museum.

The date and location of the Fall Tour was set at the Director's meeting (September 25th and 26th; Millinocket area). A request went out for volunteers to host the event. Stanley Young had already scouted some possible stops in Millinocket; and Patty Shappy, Chelsea Shappy, and Bob Stackpole stepped forward after the meeting to offer their services in planning the Fall Tour.

The location of the Late Fall Get Together is still up in the air. One member has offered to be the fall back host if another host/ volunteer doesn't step forward. (Editor's note: Being the Late Fall Get Together host is not painful; a southern or western Maine location is preferred.

Treasure Higgins address the membership on the 2010 Chapter budget. Financially the Chapter is in good shape, although dues have been slow in coming in. After the Treasurer's Report there was a motion and vote to donate \$250.00 to each of the three railroad organizations the Chapter had historically supported.

The 2009-10 slate of Directors and Officers was nominated and voted in as the 2010-11 slate of Directors and Officers with no other nominations submitted.

After the 50/50 raffle and handout of several raffle items the meeting adjourned.

Ramblings

By Lars Ohman

RAMBLINGS...right at the finish line for time! I know Peter is chomping at the bit to get newsletter all formatted and into print form by 5:00 PM. (Editor's note: Sunday, April 4th for publication Monday, April 5th.)

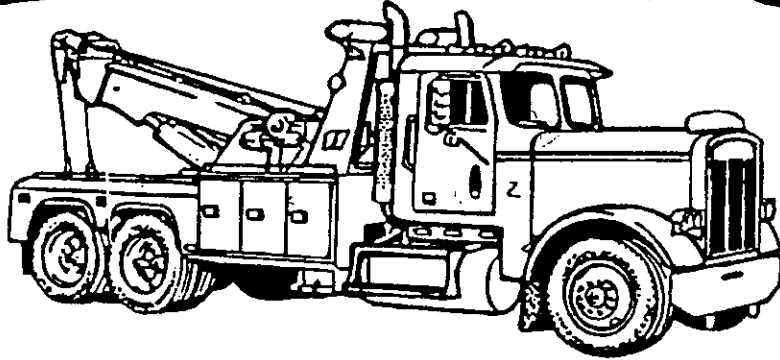
I just ran in from Longview, TX, with a Sterling Tri-axle Dump. I picked it up at noon on Thursday, and was home in Sabattus @ 8:30 Saturday night. This calls for a drastic case of "Creative Log Book 101" and I have spent way too much time making my log book look really legal. DOT people do not like to see more than 11 hours a day driving time, with 10 hours off duty. It looks good from my house, and thanks to good weather and only one accident in Louisiana.

It is not a pretty sight when you run over a 10 or 11 foot alligator with your Jeep station wagon. Both the driver and his passenger got banged up, the jeep was flipped end over end and totaled, and the 'gator will be turned into a purse or a pair of cowboy boots. The second detour was caused when a Snowbird Motorcoach collided with a tanker, burst into flames under the Interstate Bridge, and caused us a 40 mile detour. CB chatter did mention nobody was seriously hurt, but the Interstate will be shut down for a complete bridge inspection.

Last month, I started scanning back issues of the Newsletter for interesting things that some of our newer members might not be aware of, and as a reminder to us old timers of good times we have had in the past. Let's go to the March 2004 issue. Chapter Prez Clayton Hoak made the purchase of his '75 Chevy 90 series tractor with a power-packed Detroit 8V -71. Richard Bumpus's buddy Wayne Whittemore related his story how the family has had the same '49 GMC Pick-Up in the family for 50 years of service doing chores as needed. It only has about 49,000 miles on it with the same front tires since 1957...47 years. "Buster" Downing was cleaning out a few of his extra vehicles, one of which, a 1964 Dodge One Ton rack truck, wound up in the Rusty Fenders Estate collection of Don and Diane Munsey. Charlie Huntington stepped up to the plate and agreed to set up a Chapter Web Site, which we still enjoy today.

Let's jump to the June 2004 issue. Clayton was headed to the Reo Convention in Michigan...100 years for the old REO moniker. On spring tour, we visited one of the only operating 8 foot clapboard mills in America. The town was Sedgwick. The mill was powered by a two-cylinder "W" series John Deere power unit, and parts of the belting and machinery date back 100 years. There it is folks, a couple of views in the rear view mirror, and looking forward to another summer of tours, gatherings, and meeting old friends. See you on down the road, Lars

PHILLIPS & SONS



BODY SHOP

HEAVY TRUCK & FLEET
COLLISION REPAIR • FRAME STRAIGHTENING

GORHAM
MAINE **839-4975**



Moosehead Cedar Log Homes

Making certain you love your home...

1-800-566-9182
Corp. Design Office
441 Pritham Ave.
Greenville, ME 04441
info@mclh.net
www.mclh.net



From the Workbench

By Peter Mullin

Well, the annual business meeting has come and gone. Most of the events have been confirmed for the year. One had to be adjusted at the request of the hosts/tour directors. It looks like we are following along with the popularity of logging on TV. The spring tour is headed for the Rumford area and then for the fall tour we will be headed to Millinocket to visit the Discovery Channel's "American Loggers" – better known to us as the Pelletier brothers of Gerald Pelletier Inc.

Stanley Young reported at the annual meeting that he had swung by and visited with Eldon Pelletier and that we would certainly be welcome to stop by their shops while we are on tour in the area. Stanley also reported that the drivers love the two new Mack Titans (one of which debuted on last night's episode) because they have plenty of power. At 605 horsepower I would think they would be adequate for the job.

The membership voted, due to improved cash flow, to re-instate donations to the Maine Narrow Gauge Railroad, the Wiscasset, Waterville & Farmington Railway, and Boothbay Railway Village. Speaking of railroads... the annual re-railroading of officers and directors went along rapidly as it usually does.

I received an e-mail from Adam Libby just before Nancy and I headed off for Florida. As many will remember Adam and his family hosted the Spring Stretch last year. They are planning a car and truck show of their own for some time in May or June. Details will be published as soon as they get worked out.

After a little bit of pre-meeting coercion Stanley Young "volunteered" to host this year's Spring Stretch at his home and shop in Greenbush on April 17th. At this point it is not likely that Nancy and I will make this event as that is the first weekend of "snow bird return season" for us. We are planning on attending the Spring Tour, Watson's Water and Wheels, the Bonny Eagle Show, and Adam Libby's show (and that only takes us to mid June). So, I am sure we will be seeing a lot of you along the way as we build up to Owls Head!

DUES DUES DUES DUES

It is time to remind everyone the 2010 dues are due. Pine Tree Chapter Dues of \$10.00 run from January to December. Payment should be sent with the form on the back page to:

Pine Tree Chapter ATHS
C/o Paula Hersom
15 Bridge Road
Brunswick, ME 04011

Please contact Paula at (207) 442-0701, or pbhersom@gmail.net to confirm prepayments (2010 and beyond) and ¾ Century Club membership with Paula. All dues need to be paid by early June so your membership doesn't lapse. Thank you.

**Bring your old car, truck, tractor,
or whatever to the
Open House and Car Show**

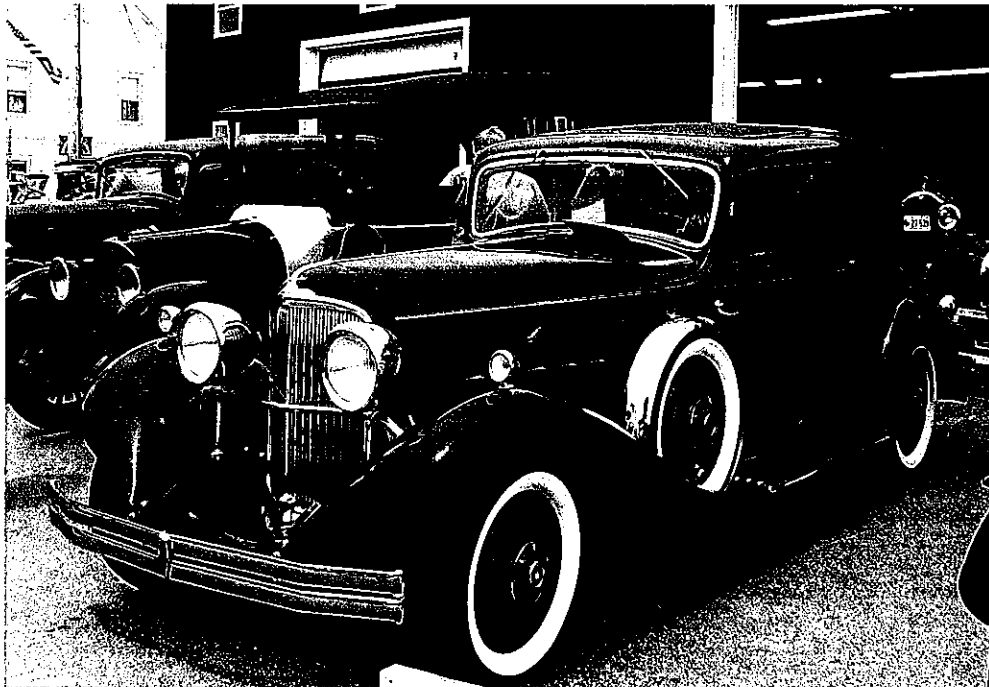
You are welcome without a vehicle.

**Saturday, May 1, 2010 9:00 AM to 4:00 PM
Rain or Shine**

Antique Express, Inc.

**Antique Truck and Auto Restoration Shop
15 New England Road
Searsmont, ME**

This is the 8th year and the program will be about the same, Junk food all day starting with coffee and donuts at 9:00 AM and lunch at noon. Once again this year we will be accepting SMALL donations to help defray the cost of the food and the band. See you there.

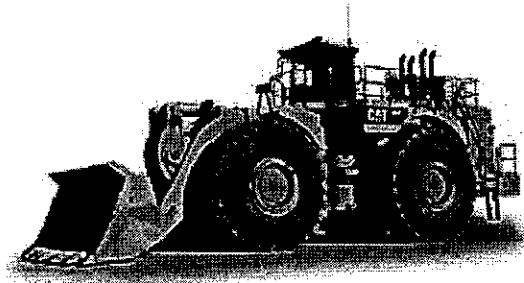
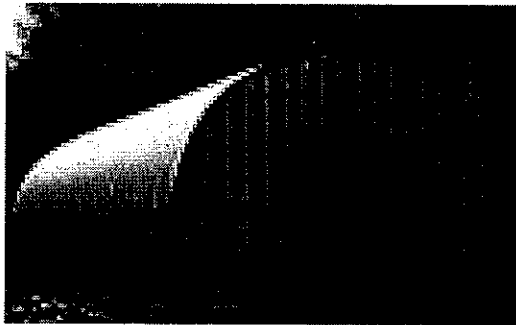


Spring Stretch

Stanley H. Young (SHY) has graciously volunteered to host the 2010 Spring Stretch on April 17th at his home and equipment emporium in Cardville. Directions from downtown Old Town – continue north on Route 2 through Milford and Costigan approximately 5.7 miles. Turn right onto the Greenfield /St Regis Road. Stay left on the Greenfield Road and go approximately 5.7 miles to 276 Greenfield Road.

The gathering will start between 9:30 and 10:00; coffee and donuts will be provided. Lunch is pot luck. Please bring a crock pot, sandwiches or desert to share.

Mr. Young has several trucks and pieces of equipment he has acquired for re-sale. On April 17th he will have special sale pricing marked on all these items. Those with CIF (cash in fist) will have first refusal on the sale priced items and may remove purchased items the day of the sale. Arrive early. You won't want to miss the best deals.



Stanley Young prepares to yard out his storage building in anticipation of the Pine Tree Chapter's visit. He figures it will only take three to four hours with his CAT loader.

Welcome New Members

The Chapter welcomes new members Tom Knowles of Norridgewock, Maine and Henry "Hank" Morrill of Freedom N.H. Tom joined the Chapter at the Owls Head Show in 2009 and got lost in your President's paperwork shuffle. Our apologies. Hank joined in November 2009 and attended the Winter Gathering at Gushee's. It was nice meeting you Hank. Hope to see both of you at one or more of our events in the near future.

Chapter Bulletin Board

SOLD: 1967 V-195 International. Ex- Freeport fire truck cab and chassis - V-478/ 5 speed/chrome grill/ 18,000 miles/ good 900x20 tires/ juice brakes. (Editor's note: Look for this truck at a truck show near you soon.)

Wanted: Spicer 8031 or 8341 auxiliary transmissions; similar high torque 3 or 4 speed auxiliaries considered; needed to convert road tractors to roadable field (farm) trucks. Contact Evan Grass, M.E. Grass & Sons, Inc., Mars Hill @ 1-800-564-5451

For Sale: 1965 Ford F850 Marmon-Herrington Four Wheel Drive Conversion. Restored, painted, top engine rebuild on the 477 Ford engine. Really nice truck which attracts lots of attention. \$8,500.00 Contact: Jon R. Doyle @ 207-242-7414
Or email: jdoyle@doylenelson.com

Wanted: Leads on location of a GMC 9500, Steel Tilt or Crackerbox with the GMC 637 V-8 gasoline engine. The engine was introduced in 1966 and produced as late as 1976. It was the GMC 478 V-6 with two added cylinders. Contact Mario Carrier in Farmington @ 207-557-0310.

Wanted: Antique cars & trucks to repair. Many years experience. AJ's Inspection Station, 709 Old Post Road, Bowdoinham, Maine. Contact Arthur Johnson at 207-666-8787 or patart1939@aol.com

For Sale: 1965 DUROBILT 6 car carrier trailer converted to 3truck transport, w/ratchet tie downs, good tires & Brakes, beaver tail – easy load - Must go \$1500.00 OBO Contact: Jan 802-263-5458 or gptrees@tds.net.

For Sale: 1952 CHEV 3800 (1 ton), 4 X 4, S&P Dump, 366 Big Block, 4 Spd, 4 Barrel, leather buckets, stereo, custom interior, carpeted floor moon roof, 5 window cab, power right window, runs great - \$8500.00 OBO Contact: Jan 802-263-5458 or gptrees@tds.net.

For Sale: 2010 Antique Truck Calendars. They make excellent Christmas gifts. Proceeds from AHS Beer City Chapter (Milwaukee, WI) calendar sales sponsor scholarships to the trucking industry. One calendar - \$6.50 includes postage; two or more - \$7.50 each includes postage. To order email Ed Wistl at ewistl@tds.net or call Gerald Lebrick at (262) 878-3052.

Your 2010-11 Chapter Officers and Directors:

President - Clayton Hoak- 299 East Stage Road, Pittston, ME 04345 (207) 582-3224; email - choak@myfairpoint.net

Vice President- Peter Mullin- 200 Stanford Street, South Portland, ME 04106 (207) 767-6080; email - wfd44@maine.rr.com

Secretary/ Treasurer- Allen Higgins and Paula Hersom - 15 Bridge Road, Brunswick, ME 04011 (207) 442-0701; email - pbhersom@gmail.com

Director- Erv Bickford- Dirigo Restorations, Yarmouth, ME 04096 (207) 846-8662

Director- Mike Gladu- 302 Center Drive, Orrington, ME 04474 (207) 825-4729; email jmgladu@yahoo.com

Director- Tom Heald- 10 Goudy Street, South Portland, ME 04106 (207) 799-5318; email lilbucksaw@yahoo.com (Note new e-mail address)

Director- Lars Ohman- 6 Antique Drive, Sabattus, ME 04280 (207) 375-6515; email peckapohl@roadrunner.com

Director- George Sprowl Sr. - PO Box 220, Searsmont, ME 04973 (207) 342-5818
gsprowl@fairpoint.net

2010 Season Schedule of Events
Edition # 2 – Note: Several Additions and Modifications

- April 17 **Pine Tree Chapter** Annual Spring Stretch Location: Stanley Young's in Cardville, ME. Bring your summer toys and a pot luck meal. Additional information inside this newsletter. Contact: Clayton Hoak (207) 582-3224
- April 24 Yarmouth, Maine Heirloom Day Festival – A Celebration of All Things Collectible Antique trucks wanted for one day stationary display; sponsored by the Yarmouth Historical Society. Contact: Yarmouth Historical Society at (207) 846-6259
- May 1 Antique Express Annual Open House, Searsmont, ME contact George Sprowl @ 207-342-5818
- May 2 ATCA Western Massachusetts Chapter Annual Antique Truck Show. Polecan Products (formerly Harding Industries 147 North Main Street, South Deerfield, MA. Contact Fred Chase at 413-863-8634 or Craig Gaudry @ 413-863-2131
- May 14-16 Granite State Chapter – ATCA Spring Truck Tour – Quechee Gorge, VT area Contact: Don or Marilyn Smith (603) 664-9761
- May 22-23 **Pine Tree Chapter** Annual Spring Tour – Rumford area and west. Contact: Allen Higgins @ (207) 442-0701
- May 27-29 ATHS National Convention and Truck Show. Alameda County Fairgrounds, Pleasanton, CA. see Wheels of Time for more information.
- May 29-30 Owls Head Transportation Museum Out of the Barn: Truck & Auto Show. Contact the Museum @ 207-594-4418 or visit their website – www.owlshead.org
- May 31 Annual Memorial Day Parade, Searsmont, ME 10:00 am sharp Contact George Sprowl @ 207-342-5818
- June 6 ATHS Ocean State Vintage Haulers Annual Truck Show. Johnson War Memorial Park , Johnson, RI Contact: Joseph Pingitotre II @ 401-692-0095
- June 6 ATHS Metro Chapter 20th Annual Truck Show. Automatic Switch Company, Florham, NJ 9 am to 3 pm Contact: 973-726-4586
- June 12-13 ATCA Connecticut Yankee Chapter, Bethlehem Fairgrounds Route 61, Bethlehem, CT Contact Pat Archiere @ 203-790-4186
- June 12 Maine Antique Power Association 37th Annual Show – Skowhegan Fairgrounds, Skowhegan, ME Contact: Joe Kelley 207-862-2074
- June 18-20 ATCA Annual Truck Show & Flea Market, Macungie Memorial Park Near Allentown, PA Contact: ATCA (412) 366-0392.
- June 16-20 Watson's Water and Wheels, Naples , ME Contact Lars Ohman (207) 375-6515
- June 27 ATHS Nutmeg Chapter 22nd Annual Truck Show-& Flea Market Brooklyn Fairgrounds, Brooklyn, CT Contact: John Raymond (860) 886-4621.
- June tbd Maine Antique Tractor Club 15th Summer Festival
www.maineantiquetractorclub.com or Bob Davids 207-938-3258
- July 4 Annual Front Street Shuffle – part of Bath ME Heritage Days; 11 a.m. to 4:00 p.m. Contact Bath Heritage Days (207) 442-7291.

- July 17-18 **Pine Tree Chapter/** Owls Head Transportation Museum 2010 Annual Truck, Tractor and Commercial Vehicle Show. More details as the date gets closer.
- July 17-18 ATHS Long Island Chapter's Annual Truck Show at the Hallockville Farm Museum Riverhead LI, NY Contact Denis Ryan (631) 821-4845.
- July 24-25 Eliot Antique Tractor show. Raitt Homestead Farm, Rt 103 Eliot, Maine. Contact Lisa Raitt, (207) 748-3303
- July 31 Green Mountain Chapter – ATHS Annual Show – at the High School Route U.S. 5 Bellows Falls, VT Contact: Jan Phelan (802) 263-5458.
- Aug 1 New England Chapter – ATHS Annual Show – Elk's Lodge 90 Park Street Hudson, MA Contact: Peter Berardi (508) 481-0011. Expanded Area
- Aug 1 Annual Truck, Farm and Construction Show – Batavia, NY Empire State Antique Truck Association Contact: (716) 751-6006
- Aug tbd Annual Friends of Togus VA Hospital Car Show and Picnic. Hosted by the Rusty Nuts Car Club, Contact: Contact Ralph Rogers @.
- August 22 Granite State Chapter – ATCA Annual “Barrington” Show – Contact: Don or Marilyn Smith (603) 664-9761
- August 29 ATCA Little Rhody Chapter Annual Truck Show- RI-CT Historical Airport, Coventry, RI New Location Contact: Roger Volatile (401) 647-7226.
- Sept 10-12 HCEA International Convention – Washington Fairgrounds, Rt 112, Richmond, RI –Info@ hcea2007@yahoo.com
- Sept 18-19 Owls Head Transportation Museum Earth Movers and Shakers Show Contact the Museum @ 207-594-4418 or visit their website – www.owlshead.org
- Sept 25-26 **Pine Tree Chapter** Fall Tour – Millinocket/ Katahdin Iron Works/ Rip Dam etc. Details tbd; Contact: Clayton Hoak (207) 582-3224
- Sept 25-26 ATHS Hudson Mohawk Chapter Antique Truck Show & Flea Market Ballston Spa, NY Contact Dick Linstead (518) 581-1829.
- Sept 26 - Oct 2 Cumberland Fair Antique Truck Display (static), Cumberland Fairgrounds.
- Oct. 1 - 2 20th Annual All Mack Truck Show at Gerharts in Lititz, PA Details write: Box 405, Lititz, PA 17543 or call 717-625-8544
- Oct. 3 - 10 Fryeburg Fair
- Oct. 6 - 9 Hershey 2010
- Oct. 10 ATHS Pioneer Valley Chapter Show at Dufresne Park, Route 202, Granby, MA Contact James Kicza (413) 315-4115
- Oct 23 **Pine Tree Chapter** Late Fall Get Together/ Great Fall Auction Location and Volunteers needed; Details tbd; Contact: Clayton Hoak (207) 582-3224
- Nov 6-7 Higmo's Logging and Music Annual Saw Mill Days; Details to be perfected; Contact: Allen Higgins or Paula Hersom (207) 442-0701

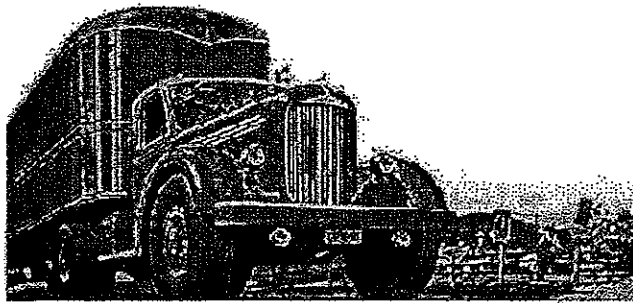
Stingray City Collectibles

Diecast Promotions - First Gear - Tonkin - Ertl

Spec Cast - Tonka - Norscot - Hess

Investment Quality Transportation, Agricultural and
Construction Collectibles

Locator services available for those hard to find missing pieces to
complete your collection.



Peter Mullin

200 Stanford St.

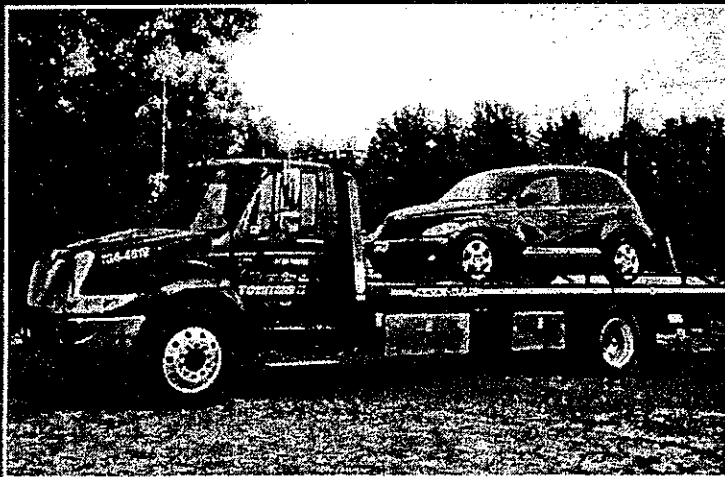
South Portland, Maine 04106

Phone (207) 767-6080

Email wfd44@maine.rr.com



**NO PREFERENCE
TOWING CO. OF L.A.**



784-4619

**24-Hour
7 Days
Service**

**We
Honor
All
Motor
Clubs**

940 WASHINGTON ST., AUBURN

"We don't want an ARM & LEG, just your TOWS"

DUES NOTICE - Membership Renewal + Update Form

Please sign me up for another years worth of membership in the Pine Tree Chapter, ATHS. Membership in the American Truck Historical Society is required.

Name _____

Date _____

Street _____

Phone: () _____

City _____

E-Mail _____

State _____

Zip _____

Pine Tree Chapter Dues of \$10.00 run from January to December.

Mail to:

**Pine Tree Chapter ATHS
C/O Allen Higgins
15 Bridge Road
Brunswick, Maine 04011**

Pine Tree Chapter ATHS
c/o Peter Mullin
200 Stanford Street
South Portland, Maine 04106

Next events: April 17, 2010 PTC Spring Stretch @ Stanley Young's - just off Route 2 in Cardville.
April 24, 2010 Yarmouth (Maine) Heirloom Day – Stationary Truck Display
May 1, 2010 Antique Express Annual Open House – Searsmont
May 22-23, 2010 PTC Spring Tour – Rumford Area – Details Next Shop Manual