



Shop Manual

June 2023

President's Message

www.badgoat.net/ptcaths

Just like that, it's the middle of June and some key events are already in the rear-view mirror. The Springtime Truck and Tractor Show, the ATHS Convention in Reno, and the ATCA National Show in Macungie have all come and gone in the past 14 days or so. My how time flies!

We are pushing this edition out a little sooner than originally planned. Fortunately, we received news that departed chapter member Mike Hannigan's family had planned a celebration of his life for Sunday June 25th at Mike's shop in Greene, Maine with sufficient lead time to adjust the newsletter schedule and get this one out in time. We were not so fortunate in receiving news of celebration of life plans for departed member Dana Watson. Dana's family had plans for a celebration of his life this weekend at Watson's Water and Wheels in Naples. As I write this, I am uncertain if Dana's Celebration of Life went forward, as planned, given this weekend's abysmal weather. (Editor's note: Dana's Celebration of Life did occur – see Lars' "Stop the presses" story.)

In only 4 weeks many Pine Tree Chapter members will gather at the Owls Head Transportation Museum for the Owls Head Truck Show. At the recent Board of Director's meeting resuming the Pine Tree Chapter cookout was discussed at some length. Director Howard Clouston volunteered to take the lead and investigate bringing this back. Howard had some discussions with the museum and at their request, and out of respect for their onsite food vendor, we will not be resuming the cookout at Owls Head. Going forward, we will focus our efforts on securing some level of food service (lunch) at our own Topsham Truck Show in September.

The planning committee process for the Topsham Truck Show has begun. Fortunately, we have a pretty solid foundation to start from with just a tweak or two taking hold each year. Our big goal for this year is to have food (particularly lunch) available in our area during the event. This could be volunteer staffed food by donation or a licensed food truck. Our other big goal for the planning committee this year is to lay the groundwork to take the show to 2 days in 2024. Anybody interested in volunteering to help or serve on the committee, anybody with food truck contacts, or willing to staff a grill/canteen truck please contact me at wfd44@maine.rr.com or 207-838-5069.

I have recently returned to trucking - driving a 10-wheeler dump for a local property maintenance/excavation contractor. So, on certain days it may take a little longer to get a hold of me since I don't take my phone with me when operating the loader and occasionally have my hands full with city traffic. But leave a voice message, email or text and I will get back to you as soon as I can.

I hope to see a lot of you this coming Sunday at Mike Hannigan's shop and at Owls Head in a few weeks. Also, **please respond** to the RSVP request if you plan on attending Bob and Lucy Stackpole's Clambake on Saturday evening of the Truck Show. The Clambake notice is further in this newsletter.

Peter

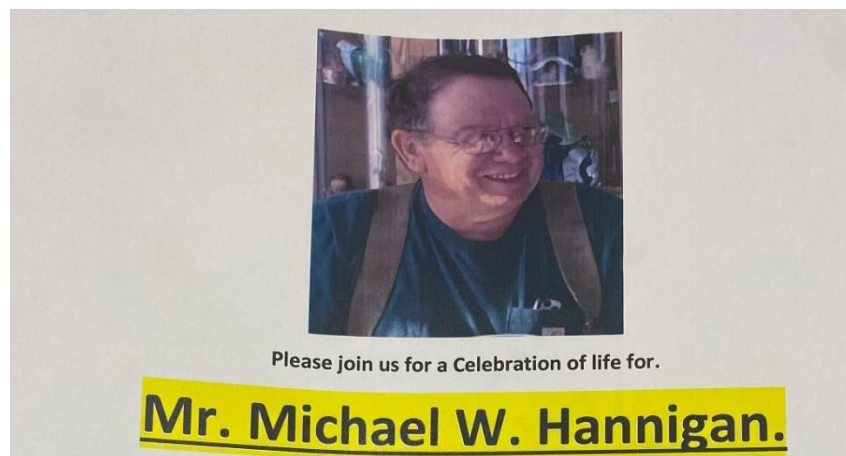
RAMBLINGS by Lars Ohman

Saturday May 10th found myself and Ron Bisson on our way up to Patten to attend Doug Wakefield's Springtime Truck & Tractor Show. I say "Doug's Show"...actually it takes lots of hands to put that show together, and the turnout under cloudy skies did not detour the diehards. Met a nice bunch of folks we don't get to see too often, and the turnout was heavy to logging trucks from the area. The grills were well-staffed, and everyone had their fill. After lunch was the drawing for three trucks, part of a tradition that started in 2013 as "Acts of Kindness". This year, all three of the winners were from out of state (some might say: "From Away") but just goes to prove how far flung this drawing draws folks. My thanks to Doug, and his able crew, and the Richardson Family for hosting. I wonder what he is going to come up with for trucks next year? Stay tuned, I'm sure you will hear more from Doug.

Ron Bisson and I headed south just before the sky opened up. On the way we had a long running conversation about where the Chapter was headed, the upcoming Owls Head Show, then the Topsham show, and Ron's adventures with the Crooker organization site work at the new home for The Market Basket in Topsham. We did pull a stop at Dysarts for an early dinner, and obligatory blueberry pie and ice cream. We were joined by Bob Brann and Tom Dore (I suspect it was their second stop at Dysart's for the day!) They ate, and departed, Ron and I finished our dinner, asked for our check, and all it showed on our tab was for two pies.....I don't know who the culprit was, but we both owe big time to one of the two....or perhaps both! I assure you this act of kindness will be paid forward.

Before I wrap this up, just want to mention (actually too late for publication) the celebration of life for Dana Watson on Father's Day @ the Watson Compound on beautiful Brandy Pond in Naples .. Also, the next weekend on Sunday (June 25th), another Celebration of Life for Mike Hannigan, at the JDM Shop on the Sawyer Road, in Greene.

On another note, had a conversation with Larry Worley (Newsletter contributor under "The back Side of Worley's Log") Larry has been visiting various facilities for repairs to his fuel system and timing, with good results. He is under watchful eyes at the Maine Veterans Home in South Paris and can't wait to get home to "Momma Frog's cooking". About the only "Double Clutching" Larry sees these days is the two nurses "clutching" him when he gets an injection! That's about it, Just Chuggin on down the road.....Lars



We would like to honor him in a way that he would have wanted. Friends, family, lots of good food, laughter, and long-long-long wonderful conversations. An opportunity to be together and celebrate a life well lived.

Who: Any and all of us that knew and loved Mike.

Where: (The Garage) 1073 Sawyer Rd. Greene

When: Sunday, June 25th Noon – 4:00 PM

Please bring a chair, a beverage of your choice, a dish or dessert. **Burgers and dogs. Smoked brisket, ribs, and chicken will be provided.**



Tom Hudgins Photo

2023 Springtime Truck and Tractor Show Report by Doug Wakefield

Wow, every year it just keeps getting better and better. Our 2023 Show was nicknamed Roscoe's Ridge Edition, in honor of our hosts The Campbell Family. Roscoe and his lovely wife Rachel pulled out all the stops to make the 2023 Springtime Truck and Tractor Show one for the ages.

After a wet rainy week, Saturday dawned will a mix of sun and clouds. We did have a heavy shower just after our antique truck drawing but until then we enjoyed a dry pleasant day. The truck count was 50 +, with trucks from as far south as the Augusta area. Old and new, big and small, a great mix of iron. Many members of the ATHS Pine Tree Chapter made the trip up 95th street to attend, Thank You all for your interest and support.



Tom Hudgins Photo

The people of Patten stepped up to help Roscoe and Rachel with food service, set up and tear down, even having a pig and turkey roast as an after-show event, Richardson's Hardware and Shin Pond Village loaned golf carts to help shuttle spectators between parking and the Show area, just an outstanding show of people helping people.



Tom Hudgins Photo

Now on to our antique truck drawing and awards presentation. We presented two 50-year Golden Achievement Awards, one to Dean Bradbury of Lincoln, Maine and one to Richard Seger of Milford, Maine. Both Men well respected and lifelong truckers.

Our 1985 Ford LN8000 truck was won by #082 holder David Sutphen from Dublin, Ohio. Our 1974 International Full-Dress Firetruck was won by #032 holder John Carrier from Chapman, Maine and #139 holder Donald Radford from Nebo, North Carolina choose 500.00 dollars over the 60s era lawn art International Pickup (had not run in years). A very wise man, Mr. Radford. We also played and enjoyed truck trivia with the kids in attendance. A Five Dollar prize to each kids gets you a lot of fun answers.

Got to wrap this up as Thomas Hudgins and I are off to Macungie, PA in the morning, A Great Show, Great People, and who will ever forget Grisswald, the Gentle Giant Great Dane Mascot of the show, Needless to say everyone had a great time at the Show!



Doug's granddaughter, Faith, and the Gentle Giant, Grisswald (Doug Wakefield photo)

Sargent Snowplows / Union Iron Works / Don Sargent / Maine Steel Inc. Part III

In the late 30's Maine Steel, Inc. had invested heavily in the creation of the Sargent Overhead Shovel due to the lack of demand for its' snowplows due to several mild winters. When WWII broke out the manufacturing capacity of the South Portland facility was dedicated to the war effort and the manufacture of marine hardware. In 1943 George Soule took this opportunity to expand and purchased the Mallison Mill in Windham, followed, in 1945, by the purchase of the Keddy Mill, also in Windham, to produce the Sargent Overhead Shovel (and possibly other non-marine hardware products).

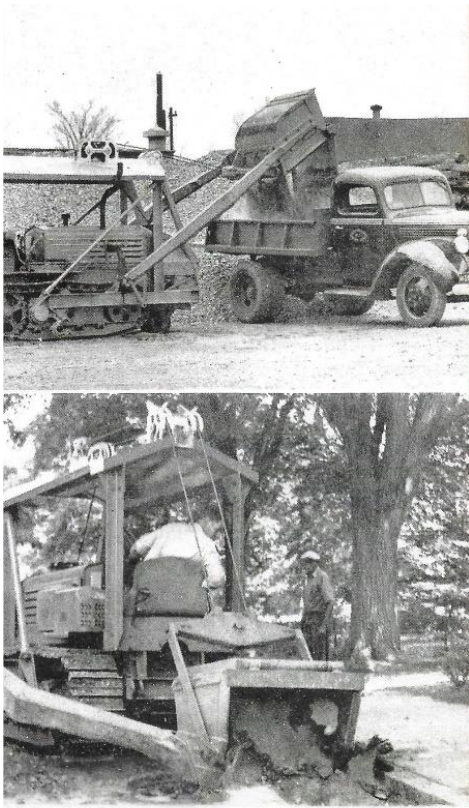
In 1946 the post war demand for large quantities of marine hardware dwindled, Maine Steel moved some of its' equipment to Windham, and the South Portland facility was sold. In late 1948 Maine Steel's business was slow, and the Mallison Mill was sold, leaving Maine Steel with the Keddy Mill only. In 1949 an unresolved wartime IRS issue led to Soule auctioning off 2/3rds of the company's machinery and drastically reducing the size of the company.

A Portland Press Herald article reported "Sargent Overhead Shovels are in use all over the world today, Soule said, and it is not intended to leave them 'fatherless.' Maine Steel will continue to manufacture them and supply repair parts for the equipment it has sold. It will retain enough machinery to produce a 'modest supply' of the shovels and accessories under its reduced capacity." In the early 50's Maine Steel moved back to South Portland, developed new products and business, and continued in operation until the early 1990's. George Soule passed in 1957.

(The information in the above three paragraphs was taken from Kathryn Onos DiPhilippo's story - A Window on the Past -Maine Steel Products of Ferry Village and Cushing's Point posted by the South Portland Sentry on April 14, 1922.)



The Sargent Overhead was advertised by Maine Steel and Cletrac as "4 machines for the price of one" ...tractor, bulldozer, power shovel and snow loader. When used as a loader digging buckets, loose material buckets and snow buckets were offered from 3/4 cy to 1 1/2 cy or 5/8 cy to 2 cy depending on the Cletrac tractor size. When digging the bucket was behind the operator and the tractor backed into the material. Once the bucket was loaded cables and pulleys lifted the bucket over the tractor and dumped the bucket onto a truck (or stockpile) in front of the tractor. One post on yesterdaystractor.com noted they were also installed on International TD-9s and TD-14s; and the buckets rate of discharge into the truck was not controllable. Other accessories included a bulldozer blade, an angle grader blade, a "V" plow and a "One-Way" plow. (Source - Maine Steel/ Cletrac sales brochures at Coles Land Transportation Museum).



SPECIFICATIONS

CLETRAC TRACTOR MODEL	BG or BD	DD-DG or CG
Horse Power of Tractor (Draw-bar)	35	60
Total Weight of Tractor & Shovel (Approx.)	6½ tons	10 tons
Capacity of Digging Bucket	¾ or ½ yd.	¾ or ¾ yd.
Capacity of Loose Material Bucket	¾ yd.	1¼ yds.
Capacity of Snow Bucket	1½ yds.	2 yds.
Size of Bulldozer Blade	30"x6'-4"	36"x7'-2"
Size of Anglegrader Blade	30"x7'-6"	36"x8'-8"
Cutting Width of "V" Plow	8'-6"	9'-0"
Height "V" Plow	30"x62"	36"x72"
Cutting Width of "One-Way" Plow	8'-6"	9'-6"
Height of "One-Way" Plow	24"x44"	28"x51"
SPECIAL FITTINGS CAN BE MADE TO CLETRAC MODELS	30	35

Manufactured by
MAINE STEEL, INC., South Portland, Maine

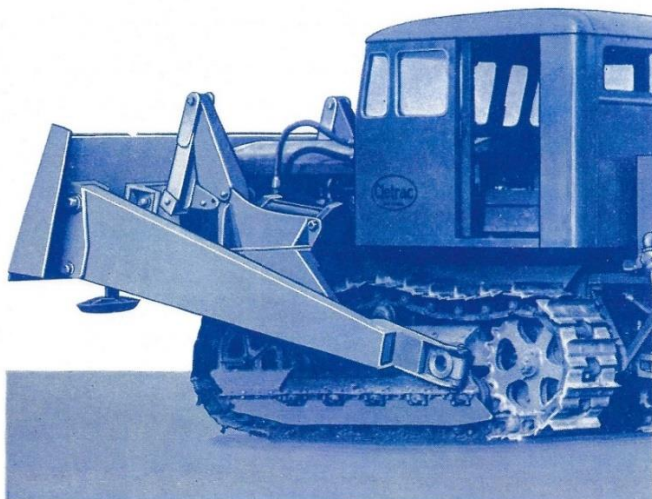
For Details
 Apply to Nearest Cletrac Dealer

Printed in U. S. A.

Bulletin No. 107

Also produced by Maine Steel for Cletrac and International (and possibly other tractor manufacturers) was the Sargent – Cletrac and Sargent- International Conversion Group machines which consisted of power units, bulldozers, angle graders and snowplows. Whereas most of the brochures are undated it is difficult to determine which product came first. Reviewing Don A. Sargent's patent applications, he submitted for a patent for combined loading and transporting equipment in September 1932 and was awarded a patent 1,934,398 in January 1934 so the Sargent Overhead may have preceded the Sargent Conversion machines. (Source – Maine Steel/ Cletrac / international sales brochures at Coles Land Transportation Museum).

Apparently not entirely satisfied with his snowplow and overhead apparatus inventions Don Sargent also applied for and received a patent for metal snow fence in 1927; and multiple patents for ventilating and air conditioning equipment from 1933-36.



The Sargent Bulldozer has a lifting speed of 12" per second. And plenty of power to lift the Blade and relieve the Tractor without stopping when too much gets rolled up ahead. It can dump its load without slowing down. It has "Down Pressure" as well as "Lift." The Blade can be made to "Float" when desired. The valve works easily.



Bob and Lucy Stackpole are having their Clam Bake this year on Saturday at 5:00 PM at 446 River Road, Cushing. They need to know how many to plan on and are asking that you please let them know by calling: 207-354-2372 or email stack123@roadrunner.com.



The Owls Head Show is even closer this issue!

Still looking for raffle items and help at the Chapter Table. If you have a donation, please let me know. Also, we are always looking for help at the table - Saturday morning setup, sales, and raffle help - any and all help is appreciated. The more people we can get to help, the more we all get to enjoy the show. Contact Nancy Mullin @ nancjmullin@gmail.com or 207-671-6925 to donate or volunteer. Thanks Nancy

Classified Ads

Classified ads may be sent or called in anytime. They will generally be run twice unless the ad is pulled by the submitter. An ad will be run additional issues at the submitters request.

For Sale: 1967 GMC Crackerbox. 671, 10 speed. Needs full restoration. Comes with a good 671 (I assume the one in it is no good). \$3500 firm. I have a spare cab for another \$1,000; **Also For Sale:** 1951 GMC 640 road tractor and 630 parts truck. 471 Detroit, 5&2. Air brakes. Truck is all apart but I have everything. Very nice body. Hasn't run in 10 years but stored inside. Good candidate for a restoration. \$3500 obo; **Also For Sale:** 1956 Dorsey 30' step deck. New 15" tires. New deck. Air brakes. Built in ramps. Probably 7 Ton capacity. Restored and in 8/10 condition. \$4500 obo; **Also For Sale:** 1972 GMC 9500. Cab and chassis. Single axle. Complete, but needs restoration. 671, 10 speed. Starts in the cold and runs like a top. Radial and tubeless tires on Budd wheels. Passenger side cab has rust. Driver's side has been patched. \$3500 obo; **Also for Sale:** Air tag axle. Setup for Daytons. \$550; **Also For Sale:** 17.5' Beau-Roc HTT dump body with lift cylinder. Was going to make a tri axle but going a different direction. \$5500 obo. Contact Jamie - Falmouth, Me. 207-949-1360

For Sale: 1972 Ford C8000 Cabover – 1160 CAT engine; 5-speed transmission; 2-speed rear axle. Asking \$9000 OBRO. Please contact Wayne @207-318-0323 or email wjdr62@gmail.com

For Sale: Mack B-73 LST tandem road tractor – Serial No. 3533 – year unknown (2,520 B-73s were built between 1955 and 1966). Cummins engine; aluminum radiator shell; 5-speed transmission; 2-speed (direct and underdrive) auxiliary; camelback suspension; 10-22 rubber on Dayton rims; fifth wheel. Not running. B-model cab and rubber in poor condition. Nose and fenders in good to very good condition (likely replaced). Truck is in Alna, ME. Asking \$4,500 OBRO. Contact Becky at 207-737-9322 or rdavis@peco1938.com.

Pine Tree Chapter of ATHS Board of Directors (elected at the March 26, 2023 Annual Meeting)

President - Peter Mullin 6 Kinney Road, Gorham, Me 04038; (207) 838-5069; email: wfd44@maine.rr.com

Vice President - Tom Hudgins P.O. Box 43, Bradford, ME 04410; (207) 943-6548; email: tomchristopher71@yahoo.com

Secretary – Nancy Mullin 6 Kinney Road, Gorham, Me 04038; (207) 671-6925; email: nancjmullin@gmail.com

Treasurer - Cheryl Billings 1031 Pinkham Brook Rd. Durham, ME 04222; (207) 319-5167 (NOTE – PHONE NUMBER CHANGE); email: cherylbillings55@gmail.com

Director - George Barrett 2 Country Charm Rd. Cumberland, ME; 04021; (207) 829-5134, cell (207) 671-2666; email: sheepscot@zwi.net

Director - Howard Clouston 1361 Hammond St. Bangor, 04401; (207) 852-4424; email: howardclouston@aol.com

Director - Steve Corson 163 Main St., Rockport, ME 04856; cell (207) 542-4192; email: blackdogmack@gmail.com

Director - Jamie Mason 104 Falmouth Road, Falmouth, ME 04105; (207) 949-1360; email: haroldjmason@gmail.com

Director - Diane Munsey 785 River Road, Dresden, ME 04342; (207) 737-2997; email: munsandi@gmail.com

Director - Andy O'Brien 54 Upper Minot Road, Pownal, ME 04069; (207) 232-4743; email: aobrien211@gmail.com

Director - Bob Stackpole 446 River Road, Cushing, ME 04563; (207)354-2372; email: stack123@roadrunner.com

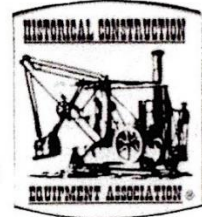
Director Emeritus/Chapter Historian (appointed) - Lars Ohman 6 Antique Drive, Sabattus, ME 04280; cell (207) 376-7993; email: peckapohl@roadrunner.com

Northeast Rockbusters

Antique Construction

Equipment Show and Display

*Presented by the Northeast Rockbusters Chapter
of the Historical Construction Equipment Association*



“We’re back in Connecticut for 2023”

August 4th 5th & 6th, 2023

**Mark Gluck’s Farm
157 Packerville Road
Plainfield, Connecticut.**

Admission: \$5.00 daily
Under age 12 is free
Hours:
9:00 am to 4:00 pm Daily

The Northeast Rockbusters Club will offer \$50.00 (fifty dollars) per machine to anyone who brings vintage construction equipment to our 2023 Northeast Rockbusters Antique Equipment Show in Plainfield CT which is held on August 4, 5, and 6, 2023.

Note: You must register your equipment at the 2023 Rockbusters Show Registration booth to qualify for the offer. Individuals must be a member of the HCEA (Historical Construction Equipment Association) to operate any equipment at the show. Information on membership in the HCEA can be found on the HCEA website at: www.hcea.net or visit the Northeast Rockbusters booth at the show.

For more info Contact

Show Chairmen
Dave Benn at 401-644-7602

Joe Turco at 401-932-2439

or Mark Gluck at 860-608-6013
email: mark614010@yahoo.com

“Hold the presses” by Lars Ohman

As a last-minute newsletter addition, the Celebration of Life for Dana Watson was held on Father’s Day at the Watson Family Lakeside Compound. Many longtime friends of the Watson’s came, brought race cars, tractors, antique autos, trucks, and lots of stories. It is estimated well over 100 ventured out under questionable skies (the kind up in the air, not on a ski slope!) and brought an appetite for potluck, and storytelling. The Watson Family would like to continue this Father’s Day Tradition..... perhaps on a scaled down one day version.....more on this later, need to get this to Clayton to get it in this next newsletter, Thanks from the Watson Family for all that attended. Dana was watching over us.....Lars

Photos from Reno



Local and Regional Events – Now through the end of season

Sunday	6/25/23	Mike Hannigan Celebration of Life – noon to 4:00 – Greene, ME
Sunday	6/25/23	Nutmeg Chapter - ATHS Show - Brooklyn, CT
Saturday	7/8/23	11 th Annual International Motor Truck Gathering – ATCA – Muncy, PA
Sat-Sunday	7/8-9/23	Long Island Chapter – ATHS Annual Show – Riverhead, NY
Sat-Sunday	7/15-16/23	Pine Tree Chapter – ATHS Gathering at the OHTM Truck & Tractor Show
Saturday	7/15/23	Boothbay Railway Museum Antique Auto Day
Sunday	7/16/23	Uncle Sam Chapter – ATCA – Greenwich, NY
Fri-Sat	7/21-22/23	6 th Annual Gear Jammer Magazine Truck Show – Greenfield, MA
Fri-Sunday	8/4-6/23	Northeast Rockbusters Antique Construction Equipment Show, Plainville, CT
Saturday	8/05/23	O’Connor Motors Squarebody Show – Augusta
Saturday	8/05/23	Green Mtn Chapter – ATHS Truck Show – Food on site!! Note New Location! Connecticut Valley Auto Auction site - 1567 VT RT 14 White River Junction, VT 8 am -2 pm
Sat-Sunday	8/5-6/23	Empire State Antique Truck Assn – Annual Show, Alexander, NY
Sunday	8/13/23	Mid-Hudson Chapter – ATCA Show – New Platz, NY
Sat-Sunday	8/19-20/23	Granite State Chapter - ATCA Old Truck Meet, Feather Airport, Deering, NH – a.k.a. Barrington
Weds-Saturday	8/23-26/23	OHTM - 45 th Annual New England Auto Auction Week
Sat-Sunday	8/26-27/23	Bay State – ATCA 20 th Annual Show, Bolton Fairgrounds, Lancaster, MA
Sat- Sunday	8/26-27/23	Athens, Ontario Truck Show
Saturday	9/9/23	The Maine Truck Show, 10:00 a.m., Acton Fairgrounds, Acton, ME
Sat - Sunday	9/16-17/23	ATHS Hudson Mohawk Chapter 31st Annual Antique Truck Show, Ballston Spa, NY
Sunday	9/17/23	Pine Tree Chapter Annual Topsham Show; with Annual Swap Meet
Mon-Fri	10/2-6/22	AACA Eastern Fall Meet - Hershey, PA
Fri- Sat	10/6-7/23	Gerhart’s Annual Mack Truck Day - Lititz, PA (source Big Mack Trucks)
Sunday	10/15/23	Ty Rods Fall Swap Meet Stafford Springs CT





Model K

MOTOR—Four cylinder, vertical, cast in pairs. Controlled by sealed governor.

LUBRICATION—Combined force feed and splash system.

IGNITION—High tension duplex magneto, and dry cells.

COOLING—The radiator is one of the vertical flat tubular type. Circulation by positive centrifugal pump. Fan mounted on motor.

CARBURETOR—Float feed with hot-air attachment.

TRANSMISSION—Selective, individual clutch type. Gears always in mesh. Three speeds forward and reverse. Gears, $4\frac{1}{2}$ -6 pitch, $1\frac{1}{2}$ -inch face.

STEERING—Worm and sliding block type.

GASOLINE TANK—Capacity 20 gallons.

BRAKES—Service brakes, internal expanding type, in large drums on rear wheels operating through U. S. perfect brake equalizer shaft and rods to foot pedal. Emergency brakes internal expanding type, acting in drums of large diameter on rear wheels controlled by hand lever.

DRIVE—Shaft drive through two universal joints from engine to transmission which is mounted midway between engine and worm, and from transmission by shaft drive through two universal joints to the rear axle worm. Shaft is in perfect line with engine shaft when truck is under rated load.

FRONT AXLE—I-beam section steel drop forging, heat treated, size $2\frac{1}{4}$ by $3\frac{3}{8}$ inches.

REAR AXLE—Worm drive. Solid steel propeller shaft and bronze worm gear equipped with

radial and thrust ball bearings throughout. Propelled through radius rods.

GEAR RATIO—Standard, $11\frac{3}{4}$ to 1; optional, $8\frac{3}{4}$ to 1.

FRAME—Special rolled 6-inch steel channel. On top of channel is riveted two by three-inch steel angle on each side for mounting of body.

SPRINGS—Semi-elliptic. Front 3 by 48 inches. Rear 4 by 60 inches.

WHEELS—Steel.

TIRES—Front 36 by 5. Rear 40 by 6 dual. Firestone Standard Equipment, other makes optional.

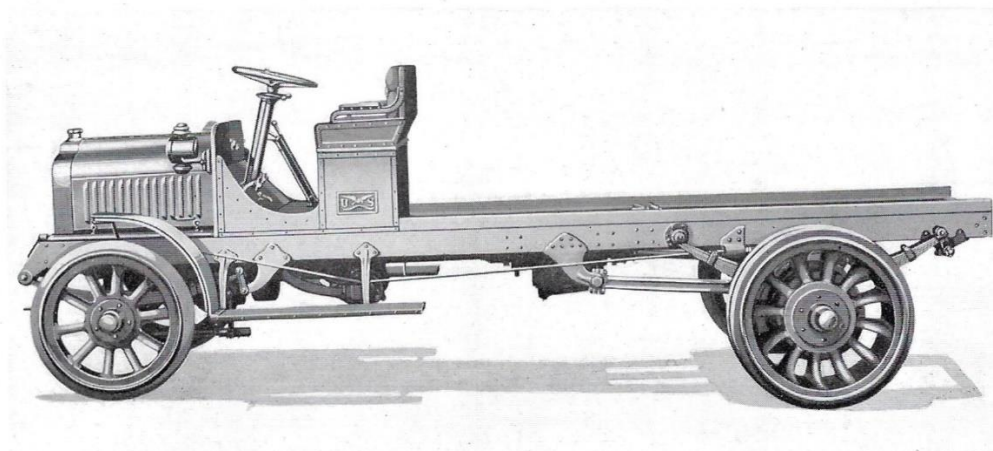
CAPACITY—5 Tons. Body allowance, 2000 pounds.

PAINT—First coat, prime; second coat, lead.

DIMENSIONS AND WEIGHTS—

Length, over all.....	21-7 $\frac{3}{4}$
Width, over all.....	8-2
Height from ground to top of lazy-back.....	6-6
Height from ground to loading platform.....	4-0
Length of frame, back of seat..	14-0
Wheel base.....	14-0
Tread.....	6-0 $\frac{1}{2}$
Weight of chassis, without body.	8500 pounds
Weight of chassis boxed for export.....	10500 pounds
Approximate dimensions of box 22-0 x 6-3 x 4-8	
Cubic contents of box, approximate.....	642 feet

STANDARD EQUIPMENT—Seat; cushions; front fenders; oil dash lamps and tail lamp; horn; set of tools, including jack; tool box and battery box on running board; and hub odometer.



Model K - 5 Ton - from undated brochure (1915 or later)

Pine Tree Chapter – ATHS
C/O Clayton Hoak
299 East Stage Road
Pittston, ME 04345

DUES NOTICE - Membership Renewal + Update Form

Please sign me up for another year's worth of membership in the Pine Tree Chapter, ATHS. Current membership in the American Truck Historical Society is required.

Name _____ *Date* _____

Street _____ *Phone:* () _____

City _____ *E-Mail* _____

State _____ *Zip* _____

Mail dues to:

Cheryl Billings, Treasurer
Pine Tree Chapter -ATHS
1031 Pinkham Brook Rd.
Durham, ME 04222

Pine Tree Chapter Dues of \$10.00 run from January to December.